



INVESTMENT CLIMATE IN KARAMAN



INVEST IN
KARAMAN

www.investinkaraman.gov.tr



Mevlana

Kalkınma Ajansı

Development Agency

KARAMAN INVESTMENT SUPPORT OFFICE

GENERAL INFORMATIONS

INVESTMENT CLIMATE IN KARAMAN



Karaman;

Combination of contemporary and traditional values...

Karaman is one of the oldest settlements in Anatolia. Within its history dating back to 8000 B.C, this city has been hosted diverse civilizations, from Hittites to Rome, Byzantine to Seljuk and Karamanoğulları.

Holding the title of capital city of Karamanoğulları, Karaman had also been among the most important settlements of the Ottoman Empire till Turkish Republic was founded.

Today, being one of the fast growing provinces of Turkey, Karaman is also called as the capital city of the Turkish World. Turkish Language Festival organized every year in Karaman gathers thousands of Turkish speaking students, writers and academicians from all over the world.

One of the most well known Sufi philosophers, Rumi has lived in this blessed place for 7 years and the tomb of his mother is in Karaman, the cradle of Mevlevi culture.

Karaman is a modern city that has combined its historical heritage with urban planning of 21. century...



GENERAL INFORMATION



**ECONOMY : AGRICULTURE AND
LEADING SECTORS**



FOREIGN TRADE



ENERGY

TOURISM



**IMPORTANT PROJECTS AND
INVESTMENT INCENTIVES**



SECTORAL INVESTMENT POTENTIAL



WHY KARAMAN



Karaman: The Capital of Food



Karaman: Next Energy Capital

- >The City That Produces 3 Times The Electrical Energy Consumption
- >The City That Has Maximum Value of Solar Radiation
- >Among The Provinces That Has Highest Wind Energy Potential
- >Hydroelectric Dams
- >Coal Potential of Ermenek and Ayrancı
- >Natural Gas Power Plants

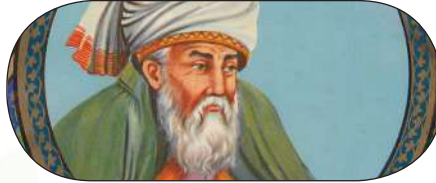
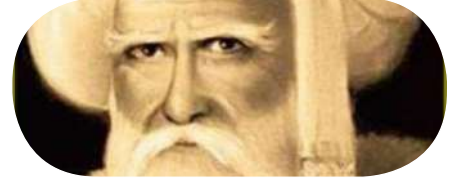


GENERAL INFORMATIONS

INVESTMENT CLIMATE IN KARAMAN

Karaman Has a Historical Background Up To 8000 B.C. The City Can Be Called As
"The Capital of History"





Karamanoğlu Mehmet Bey's;
Yunus Emre's;
Piri Reis's;
Kemal Reis's;
Şeyh Edebali's;
Kazım Karabekir Paşa's Homeland
M.K.Atatürk's Fatherland
Mevlana had lived for a long time in Karaman.
"AN ANCIENT CITY"



“An Undiscovered Tourism Potential with Nature and History”

- >Tartan House
- >The Binbir Church
- >Taşkale Granaries
- >Karadağ; Home of Wild Horses
- >The Fisandon Church
- >Ermenek Dam



“A Developing City with Its Potential and Investments”

- >A Constantly Growing Organized Industrial Zone
- >“Ermenek Dam” is One of The Most Important Dams of Turkey and World.
- >High-Speed Train
- >Modern Highways
- >Karaman Airport (Under Construction)

GENERAL INFORMATIONS

INVESTMENT CLIMATE IN KARAMAN

Karaman is a city that has been inhabited dating back to 8000 B.C. In history it was the capital of Karamanoğulları. Hittites, Phrygians, Byzantines, Karamanoğulları and Ottomans lived in these lands.



INVESTMENT CLIMATE IN KARAMAN

GENERAL INFORMATIONS

Area
8.851 km²

Agricultural Area
3.469 km²

Altitude
1033 m

Population (2015)
242.196



Neighboring Provinces

Konya, Mersin, Antalya

Main Agricultural Products

Apple, Sugar Beet, Corn, Bean, Wheat, Barley,
Sunflower, Chickpea

Main Industrial Products

Biscuit, Chocolate, Cake, Confectionery,
Cracked Wheat(Boulgour), Milk Powder



GENERAL INFORMATIONS

INVESTMENT CLIMATE IN KARAMAN



MAIN ECONOMIC INDICATORS

| Indicators | Value | |
|------------------------------|-------------------------------|----------------|
| | 2014 | 2015 |
| Export | 358.157.132 \$ | 304.159.731 \$ |
| Import | 118.889.664 \$ | 133.805.411 \$ |
| Export/Import Coverage Ratio | % 301 | % 227 |
| Unemployment Rate (2013) | %4,2(Ranked first in Turkey) | |
| GDP (2011) | 14.392 \$ | |

THE CENTRE OF ANATOLIA

15 million people in 3 hours distance by land.

At the centre of the 6 provinces which are in the top 10 populated provinces of the country.

2 hours to the biggest port (Mersin) of Turkey





Railway Connection to Major Cities High Speed Rail Transport

(İstanbul, Ankara, Konya, Eskişehir, Bursa, İzmir)
(Adana and Mersin are Under Project)

Transfer Point of High Speed Rail Transport to Many Other Cities

FERTILE SOILS

Industry in Karaman with its fertile soils has developed mostly based on agriculture and food sectors.



Economy: Agriculture and Industry Leading Sectors

INVESTMENT CLIMATE IN KARAMAN

39 % of Karaman's territory is farm land. 72 % of the farmland is irrigable. The products such as wheat, barley, corn, sunflower, sugar beet, apple and bean supporting the industry are heavily produced.

| | |
|----------------------------|----------------|
| Total Area (ha) | 885.100 |
| Farm Lands (ha) | 346.848 |
| Irrigable Area (ha) | 252.584 |
| Irrigated Area (ha) | 96.058 |



INVESTMENT CLIMATE IN KARAMAN

Economy: Agriculture and Industry Leading Sectors

Cereals production in our province is widely implemented. Industry mainly developed on the basis of agriculture. Karaman produced 169 of total 4100 kilotonnes Turkey's Durum Wheat Harvest in 2015. Karaman is in the top 10 provinces of Turkey with this production quantity. At the same time, significant quantities of barley, oats, rye production is available.

Karaman produced 39000 tons of dry beans. The City satisfies 16,55 % of dry bean production in Turkey. It has been the 2nd city of Turkey with this percentage.

Karaman produced 29000 tons of Chickpea. The City satisfies 6,38 % of Chickpea production in Turkey. It has been 4th city of Turkey with this percentage.

Karaman produced 15000 tons of Oat . The City satisfies 6% of Oat production in Turkey. It has been 5th city of Turkey with this percentage.

Karaman produced 644000 tons of Sugar beet . The City satisfies 3,91 % of Sugar Beet production in Turkey. It has been 7th city of Turkey with this percentage.

Karaman produced 388000 tons of Apple. The City satisfies 15 % of Apple production in Turkey. It has been 3rd city of Turkey with this percentage.

Karaman produced 7400 tons of Walnut. The City satisfies 4% of Walnut production in Turkey. It has been 3rd city of Turkey with this percentage.

Karaman produced 3200 tons of Almond. The City satisfies 4% of Almond production in Turkey. It has been 8th city of Turkey with this percentage.

Karaman produced 537 tons of Pumpkin Seeds. The City satisfies 2 % of Pumpkin Seeds production in Turkey. It has been 7th city of Turkey with this percentage.

Karaman produced 6000 tons of Fresh Onion. The City satisfies 4% of Fresh Onion production in Turkey. It has been 8th city of Turkey with this percentage.

Karaman produced 21000 tons of Cabbage. The City satisfies 3% of Cabbage production in Turkey. It has been 9th city of Turkey with this percentage.

Economy: Agriculture and Industry Leading Sectors

INVESTMENT CLIMATE IN KARAMAN



Karaman is 1st city considering the quantity of certified apple trees in Turkey, 3rd city regarding the apple production quantity. Karaman satisfied **13.30 %** of the Turkey's apple production in 2014 and 15% in 2015 respectively. The City satisfied **16,55 %** of Turkey's dry bean production, **6,38 %** of Turkey's chickpea production and **3,91 %** of Turkey's sugar beet production in 2015. Our city ranks 2nd in dry bean production, 4th in chickpea production and 7th in sugar beet production in Turkey.

Economy: Agriculture and Industry Leading Sectors

| Field Crops | Karaman Production Quantity (Tons) | Ranking of Karaman in Turkey | Percentage in Turkey Production |
|-------------|------------------------------------|------------------------------|---------------------------------|
| Dry Beans | 38.897 | 2 | 16,55 |
| Chickpea | 29.358 | 4 | 6,38 |
| Oat | 15.145 | 5 | 6,06 |
| Sugar Beet | 643.991 | 7 | 3,91 |
| Vetch | 122.461 | 10 | 2,86 |
| Barley | 205.103 | 11 | 2,56 |
| Corn Grain | 194.817 | 12 | 3,04 |
| Clover | 296.672 | 16 | 2,13 |
| Sun Flower | 20.504 | 18 | 1,22 |
| Wheat | 263.597 | 30 | 1,01 |

| Fruits | Karaman Production Quantity (Tons) | Ranking of Karaman in Turkey | Percentage in Turkey Production |
|---------|------------------------------------|------------------------------|---------------------------------|
| Apple | 387.679 | 3 | 15,09 |
| Walnut | 7.366 | 3 | 3,88 |
| Almond | 3.174 | 8 | 3,97 |
| Plum | 5.370 | 14 | 1,92 |
| Apricot | 3.347 | 15 | 0,49 |
| Cherry | 10.459 | 16 | 1,95 |
| Grape | 38.022 | 16 | 1,04 |
| Peach | 3.794 | 21 | 0,59 |
| Olive | 4.029 | 21 | 0,24 |
| Pear | 3.794 | 25 | 0,82 |

| Vegetables | Karaman Production Quantity (Tons) | Ranking of Karaman in Turkey | Percentage in Turkey Production |
|---------------|------------------------------------|------------------------------|---------------------------------|
| Pumpkin Seeds | 537 | 7 | 1,29 |
| Onion (Fresh) | 6.030 | 8 | 4,26 |
| Cabbage | 20.848 | 9 | 2,72 |
| Cucumber | 37.874 | 9 | 2,08 |
| Beans(Fresh) | 17.731 | 10 | 2,77 |
| Watermelon | 95.233 | 13 | 2,43 |
| Melon | 37.688 | 14 | 2,19 |
| Spinach | 4.211 | 14 | 2,02 |
| Pepper | 27.647 | 14 | 1,2 |
| Tomato | 134.261 | 14 | 1,06 |

Economy: Agriculture and Industry Leading Sectors

INVESTMENT CLIMATE IN KARAMAN

| Livestock | | |
|-----------------|--------------------|-------------------|
| Type | Karaman (Quantity) | Turkey (Quantity) |
| Bovine Total | 59.206 | 14.127.837 |
| Sheep and Goats | 616.976 | 41.924.100 |
| Horse + Donkey | 2.281 | 320.385 |
| Poultry | 1.138.660 | 316.332.446 |
| Beehive | 54.658 | 7.709.636 |

| Livestock Production | | |
|----------------------|------------------|-----------------|
| Type (Tons) | Karaman Quantity | Turkey Quantity |
| Red Meat | 2.035 | 1.149.262 |
| Milk | 117.170 | 18.654.682 |
| Honey | 426 | 107.665 |
| Fisheries | 1.710 | 235.133 |
| Egg (Piece) | 295.960.000 | 16.726.332.000 |



Industry Structure

340 Registered Large Size Enterprises

Sectoral Distribution of Industrial Enterprises

154 Enterprises with +10 Labours

SECTORAL DISTRIBUTION OF FIRMS REGISTERED IN THE INDUSTRIAL RECORD

| SECTOR | NUMBER OF COMPANIES | RATIO |
|---|---------------------|-------|
| Manufacture of Food Products | 85 | 25 |
| Manufacture of Nec Machinery and Equipment | 59 | 17,35 |
| Other Mining and Quarrying | 30 | 8,82 |
| Manufacture of Rubber and Plastic Products | 26 | 7,65 |
| Furniture Manufacturing | 22 | 6,47 |
| Manufacture of Other Non-Metalic Mineral Products | 21 | 6,18 |
| Manufacture of Wood and Cork Products (Except Furniture), Manufacture of Goods Made from Straw and Plaiting Materials | 20 | 5,88 |
| Manufacture of Fabricated Metal Products (Except Machinery and Equipment) | 18 | 5,29 |
| Removal of Coal and Lignite | 11 | 3,24 |
| Manufacture of Paper and Paper Products | 10 | 2,94 |
| Manufacture of Electrical Equipment | 8 | 2,35 |
| Electricity, Gas, Steam and Air Conditioning System, Production and Distribution | 8 | 2,35 |
| Manufacture of Apparel, Fur Processing and Staining | 5 | 1,47 |
| Manufacture of Chemicals and Chemical Products | 3 | 0,88 |
| Manufacture of Trey Motor Vehicles (Trailers) and Semi-Trey (Semitrailer) | 3 | 0,88 |
| Supporting Service Activities for Mining | 2 | 0,6 |
| Manufacture of Beverages | 2 | 0,6 |
| Recycling of Classified Materials | 2 | 0,6 |
| Pressing and Reproduction of Recorded Media | 1 | 0,29 |
| Basic Metal Industry | 1 | 0,29 |
| Manufacture of Other Transport Equipment | 1 | 0,29 |
| Installation of Industrial Machinery and Equipment | 1 | 0,29 |
| Manufacture of Coke and Refined Petroleum Products | 1 | 0,29 |

Note: Industrial Companies Located Within The Scope of Law No. 6948

Economy: Agriculture and Industry Leading Sectors

INVESTMENT CLIMATE IN KARAMAN

Karaman occupies a significant position in manufacturing – food industry subgroup biscuit and cracked wheat industries. Around one third of biscuit production and 20% of cracked wheat (Boulgour) production in Turkey are satisfied by Karaman.



Istanbul Chamber of Industry's Top 500 and Second 500 Industrial Enterprise Survey

Top 500 Company

| ORDER | | COMPANIES | CHAMBER | PRODUCTION SALES (Net) (TRY) |
|-------|------|---------------------------------------|---------|------------------------------------|
| 2015 | 2014 | | | |
| 121 | 117 | Biskot Bisküvi Gıda San. ve Tic. A.Ş. | Karaman | 786.133.928 |
| 171 | 178 | Bifa Bisküvi ve Gıda Sanayi A.Ş. | Karaman | 605.908.765 |
| 417 | 438 | Şimşek Bisküvi ve Gıda Sanayi A.Ş. | Karaman | 279.342.922 |
| 459 | 435 | Anı Bisküvi Gıda San. ve Tic. A.Ş. | Karaman | 250.036.098 |

Karaman is leading province of Turkey regarding the food based sectors such as biscuits, chocolate, cakes, waffles and boulgour. Biskot Bisküvi, Bifa Bisküvi, Şimşek Bisküvi Gıda San. and Anı Bisküvi are among the top 500 companies of Turkey in 2015. KOM GIDA Kombassan Gıda ranked 373th among the 2nd Top 500 Companies of Turkey. Although Kom GIDA belongs to the Chamber of Konya, KOM GIDA's production plant is in Karaman.

FOOD MANUFACTURING INDUSTRY



Food Manufacturing triggered variety of sectors such as packaging, raw materials and machinery. So Karaman became a completely self sufficient Food City.



Apple has the largest process share of fruit juice industry in our country with approximately 46 % percentage. Karaman is the 3rd city in Turkey's apple production. Karaman is first in terms of quantity of certified apple trees. Due to these it is expected that Karaman will be the first city in apple production soon.

There are some plants for apple processing in Karaman. Because of the potential of apple production, it is expected that quantity of such plants will increase. Döhler Fruit Juice Plant processes the apple which are grown in Karaman, and sells apple juice in domestic and international markets. Döhler Fruit Juice Plant processes products such as apple, pomegranate, sour cherry, peach, strawberry, melon. Production is carried around 15,000 to 20,000 tons per year. This sector also contributes to the Food City brand of Karaman .

Economy: Agriculture and Industry Leading Sectors

INVESTMENT CLIMATE IN KARAMAN



There are about 15 milk and dairy products facilities in our province. Three of these facilities are large scale. One of them has 1000 tons/day milk processing capacity and the other has 300 tons/day. They manufacture milk, yogurt, buttermilk and a wide variety of cheeses. Milk and dairy products sector also contributes to the Food City brand of Karaman.



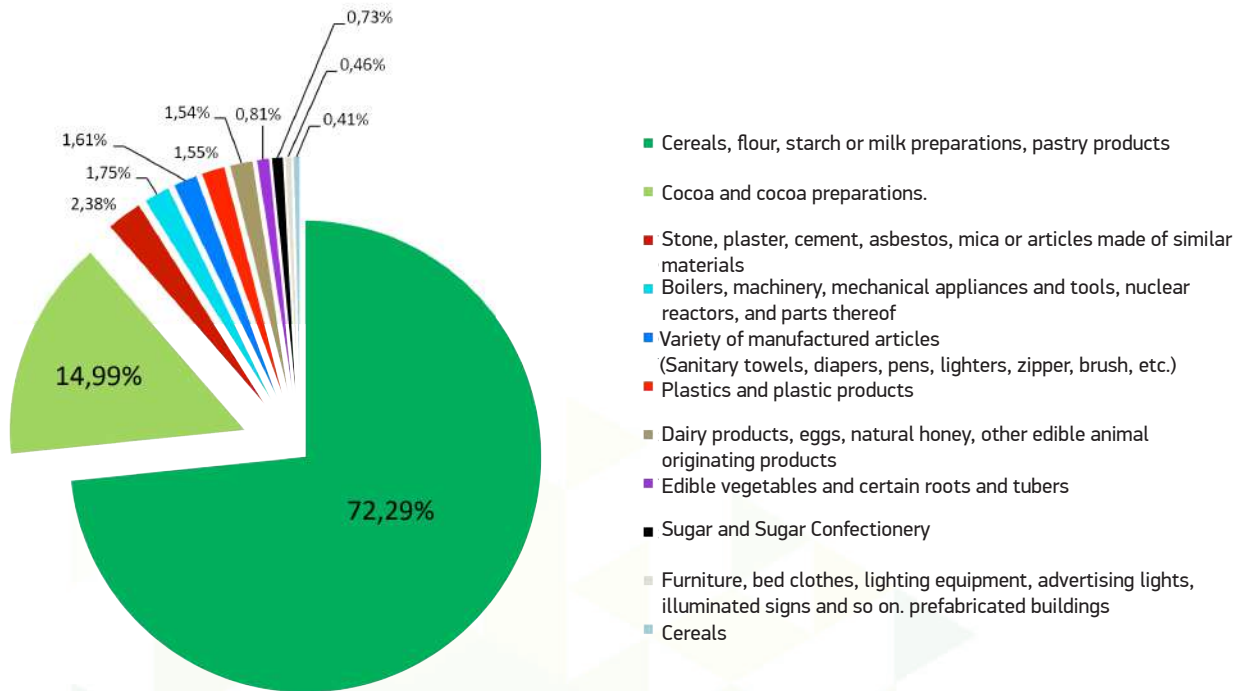
The harvest of Durum Wheat is quite high in Karaman. Because of this, there are some sectors processing Durum Wheat in Karaman such as Cracked Wheat (Boulgour) and Pasta. Regarding the pasta production there is a facility which's capacity is 260 ton/day. This capacity is one of the biggest in Turkey. In this facility there are two short cut, one long cut and one bow - tie pasta lines. There are 80 registered pasta manufacturers in Turkey.

Foreign Trade Performance of Karaman

| Years | Export (Thousand \$) | Import (Thousand \$) | Foreign Trade Balance(Thousand \$) | Coverage Ratio (%) |
|-------|-------------------------|-------------------------|---------------------------------------|--------------------|
| 2008 | 158.382 | 49.377 | 109.005 | 321 |
| 2009 | 145.701 | 43.297 | 102.404 | 337 |
| 2010 | 176.694 | 92.033 | 84.661 | 192 |
| 2011 | 231.719 | 120.882 | 110.837 | 192 |
| 2012 | 278.649 | 123.641 | 155.188 | 226 |
| 2013 | 332.000 | 136.000 | 196.000 | 244 |
| 2014 | 358.157 | 118.889 | 239.268 | 301 |
| 2015 | 304.159 | 133.805 | 170.354 | 227 |

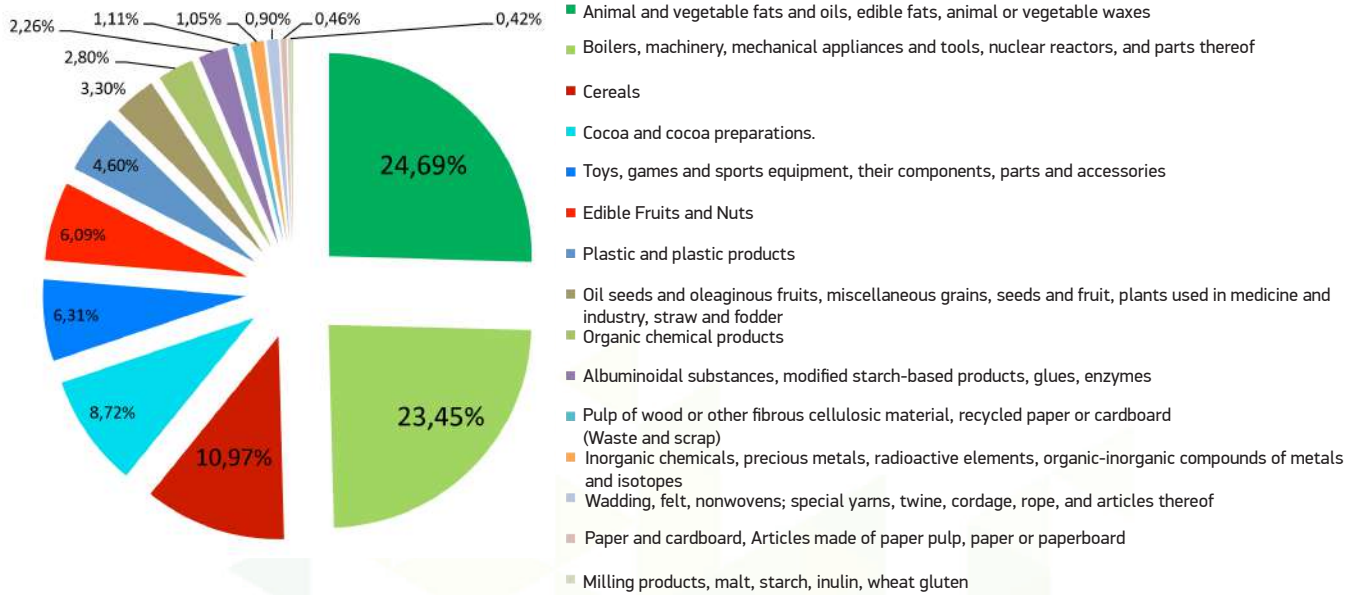
Karaman continues to manufacture and increases the export every year with the advantages of Investmet Climate and Geographical Location. The average export rate of Karaman is higher than Turkey at these years.

SECTORAL DISTRIBUTION OF EXPORTS



The export percentage of agricultural based food products is around 90% in Karaman. This sector leads Karaman industry and export.

SECTORAL DISTRIBUTION OF IMPORTS

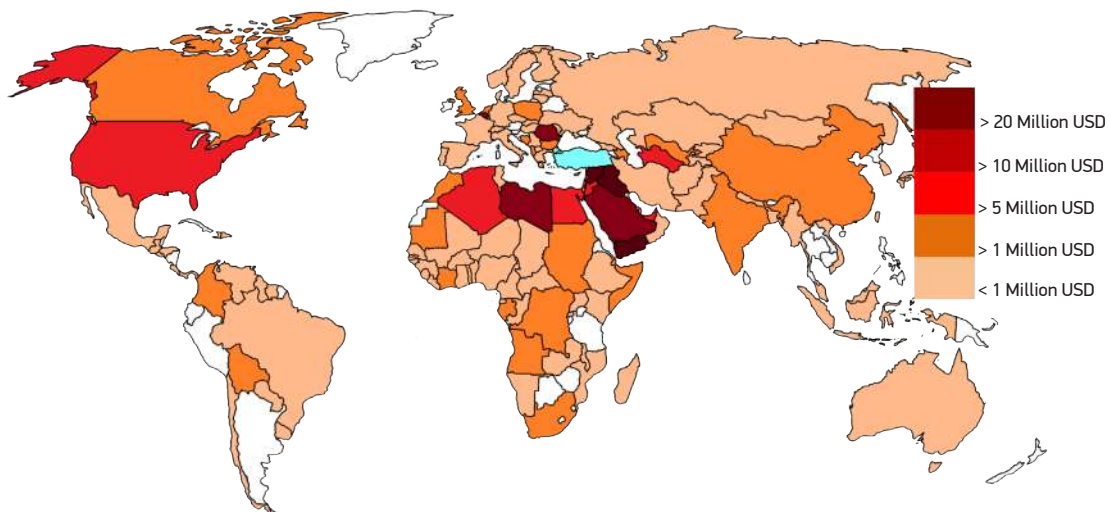


When examined the sectoral distribution of imports; the raw materials used in food sector and machinery-equipment are the important sectors.

Top 1000 Exporter Company List (Karaman Province)

| 2015 TOP 1000 EXPORTERS | | | | |
|-------------------------|----------------|---------------------------------------|---------|-----------------|
| Order | Sectoral Order | Company | City | Export(2015 \$) |
| 233 | 16 | ANI BİSKÜVİ GIDA SAN. VE TİC. A.Ş. | Karaman | 64.593.213,53 |
| 246 | 19 | BİFA BİSKÜVİ VE GIDA SAN. A.Ş. | Karaman | 61.854.724,31 |
| 297 | 24 | ŞİMŞEK BİSKÜVİ VE GIDA SAN. A.Ş. | Karaman | 53.759.372,96 |
| 545 | 49 | DOES NOT WANT TO BE QUATED BY NAME | Karaman | 33.076.708,69 |
| 961 | 65 | HAZAL BİSKÜVİ VE GIDA SAN.A.Ş. | Karaman | 19.534.028,57 |

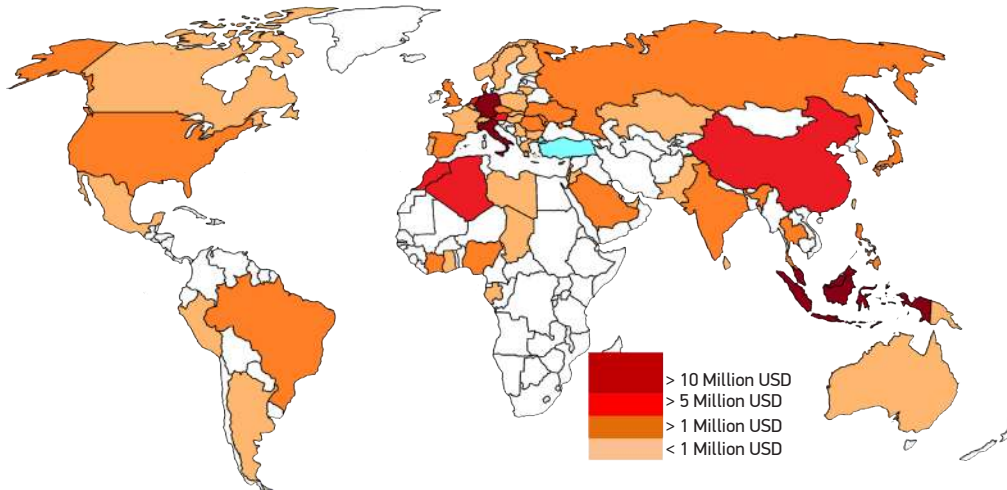
Five companies of Karaman are in the top 1000 exporters. Anı Biscuits, Bifa Biscuits, Şimşek Biscuits, Hazal Biscuits and a company who wished to remain anonymous are in this list.



Top Export Countries (2015)

| No | Export Country | % | Value (1000 \$) |
|----|----------------|--------|-----------------|
| 1 | Iraq | 15,91% | 48.378 |
| 2 | Syria | 14,05% | 42.732 |
| 3 | Yemen | 9,50% | 28.904 |
| 4 | Romania | 4,54% | 13.802 |
| 5 | Saudi Arabia | 4,15% | 12.625 |
| 6 | Libya | 4,05% | 12.316 |
| 7 | Belgium | 3,25% | 9.871 |
| 8 | USA | 3,05% | 9.264 |
| 9 | Lebanon | 2,49% | 7.583 |
| 10 | Egypt | 2,33% | 7.088 |

The export is performed to 142 countries in 2015, and Middle East countries are the main export markets. The decline has been observed to the Russian and African markets compared to 2014 export.



Top Import Countries (2015)

| No | Export | % | Value (1000 \$) |
|----|------------|--------|-----------------|
| 1 | Germany | 15,72% | 21.028 |
| 2 | Indonesia | 8,61% | 11.524 |
| 3 | Malaysia | 8,18% | 10.946 |
| 4 | Italy | 7,63% | 10.210 |
| 5 | Algeria | 7,47% | 9.994 |
| 6 | Netherland | 5,99% | 8.014 |
| 7 | China | 5,03% | 6.737 |
| 8 | Morocco | 4,73% | 6.323 |
| 9 | Austria | 4,40% | 5.892 |
| 10 | USA | 3,68% | 4.919 |

Imports from 58 countries have been carried out in 2015. The imports from the Far East and developing countries are predominant . It can be seen that imports from North African countries has increased.

MINERAL RESOURCES

| Mine Type | County | Village Location | Grade Quality | Reserve | Other Informations |
|------------------|----------------|--|---|---|--|
| Aluminum | Ayrancı | Gerdekkirse | SiO ₂ :%2,2 Fe ₂ O ₃ :%31 TiO ₂ :%3,4 | 1.000.000 t. Potential 2.000.000 t. | The Ore Mineral is diasporit, but the field was abandoned. Reserve can be used as refractory and abrasive. |
| Iron | Ermenek | Kazancı Sarıvadi | | | Iron mineralization, as well as Chromite and titanium are also seen. |
| Iron | Ermenek | Kazancı | Fe:%3-50 | Visible 60000t | Ore minerals are limonite and hematite. The production were active at the old years. |
| Lead- Zinc | Ermenek | Göktepe Mevliat mezar | Pb: %3,85 Cd: %0,01 | | The mineralization is settled at the weak zones of galena and sphalerite. |
| Barite | Merkez | Ağaçobaköyü | BaO: %62 | Appear | Inadequate Investigation |
| Bentonite Kaolin | Ermenek | Kasımoğlu location in Esentepe Village | | | Inadequate Investigation |
| Magnesite | Kazımkarabekir | Sodur (Sinci) Deveyatağı Kızılkırtepe Gökyataktepe | MgO:%46,6 SiO ₂ :%1,68 CaO: %1,35 | Probable 3.480.000 t. Visible197.500 t. | Filoniyel-type mineralization in serpentinized peridotites |
| Magnesite | Kazımkarabekir | Erentepe (Sodur) | MgO: %46,6 SiO ₂ : %1,68 CaO: %1,35 | Probable 4.640.000 t. Visible 316.700 t. | Similar properties |

In terms of raw mineral deposits Karaman investment potential is quite high.

MINERAL RESOURCES

Karaman Coal Reserve

| Type | County | Location | Quality | Reserve | Other Informations |
|------|---------|----------------------------------|----------------------|--|--|
| Coal | Ermenek | Halimiye | AID 4.063Kcal/kg | Visible 2.000.000 t. Potential 3.900.000 t. | Average coal thickness of 3.5 m and a depth of 67 m. |
| Coal | Ermenek | Boyalık | AID 3.262Kcal/kg | Potential 1.700.000 t. | Average coal thickness of 4 m, depth 150. |
| Coal | Ermenek | Muzvadi | AID 5.500 Kcal/kg | | There is a coal seam in the permian sandstones of the Çiğdemtepe Hill at south of Muzvadi Village, which's steep dipping and thickness is ranging between 0,3 and 1,3 m. |
| Coal | Ayrancı | Ayrancı Dokuzyol Akçaşehir | | 1.800. Milyon t. | 5,000 MW within the boundaries of the province of Karaman will be sufficient for 30 years. |

Solar Energy Potential

The UTM 6 degrees coordinates of the transformer stations in Karaman

| Transformer Stations | UTM Easting Value | UTM Northing Value | Zone | Total Capacity |
|----------------------|-------------------|--------------------|------|----------------|
| ERMENEK | 497480,00 | 4046971,00 | 36 | 38 MW |
| KARAMAN | 517251,94 | 4115608,13 | 36 | |
| KARAMAN OSB | 528638,87 | 4118954,31 | 36 | |

Karaman Power Plants

| | In Operation | Under Construction | Licensed | Pre- Licensed | Total |
|----------------|--------------|--------------------|----------|---------------|---------|
| Solar | 3,44 | 4,42 | 37,88 | 0 | 45,74 |
| Wind | 7 | 0 | 40 | 170 | 217 |
| Biogas | 1,41 | 0 | 0 | 0 | 1,41 |
| Hydro Electric | 527,73 | 3,72 | 31 | 0 | 562,45 |
| Natural Gas | 4,91 | 0 | 1080 | 0 | 1084,91 |
| Total | 544,49 | 8,14 | 1188,88 | 170 | 1911,51 |

In the current situation capacity of the installed power plants in Karaman is 544,49 MW, and an important part of it is hydroelectric. However, solar power plants are being built every year and the number of them increases. There are 9 Hydroelectric, 7 Solar, 3 Natural Gas, 1 Wind and 1 Biogas plants at present situation.

Karaman Active Electric Power Plants

| No | The Name of Project | Type | Company | Installed Power |
|----|---|----------------|---|-----------------|
| 1 | Ermenek Dam and Hydro Electric Power Plant | Hydro Electric | EÜAŞ | 302 MW |
| 2 | Daran 1 and 2 Hydro Electric Power Plants | Hydro Electric | Nokta Investment Holding Company | 67 MW |
| 3 | Bucakışla Hydro Electric Power Plant | Hydro Electric | Bilgin Energy | 41 MW |
| 4 | Balkusan Dam | Hydro Electric | Kipaş Holding Company | 38 MW |
| 5 | Balkusan Dam | Hydro Electric | Akkanat Holding Company | 28 MW |
| 6 | Kepezkaya Hydro Electric Power Plant | Hydro Electric | Koç Holding Company | 28 MW |
| 7 | Damlapınar Hydro Electric Power Plant | Hydro Electric | Koç Holding Company | 16 MW |
| 8 | Hilal 2 Wind Power Plant | Wind | Sanko Energy | 7,00 MW |
| 9 | Erik Hydro Electric Power Plant | Hidroelektrik | EÜAŞ | 6,61 MW |
| 10 | Karaman Bifa Biscuits Natural Gas Power Plant | Natural Gas | Bifa Biscuits | 2,15 MW |
| 11 | Karaman Şimşek Biscuits Natural Gas Power Plant | Natural Gas | Şimşek Biscuits | 1,56 MW |
| 12 | Karaman Biogas Power Plant | Bio Gas | Karaman Renewable Energy | 1,41 MW |
| 13 | Karaman Anı Biscuits Cogeneration Power Plant | Natural Gas | Anı Biscuits | 1,20 MW |
| 14 | Ermenek Hydro Electric Power Plant | Hydro Electric | Özbey Electricity Production | 1,12 MW |
| 15 | Halis Cem Solar Energy Plant | Solar | Halis Cem Energy | 0,99 MW |
| 16 | Eksun Energy Solar Energy Plant | Solar | Eksun Energy Production | 0,99 MW |
| 17 | Onurlu Karaman Solar Energy Plant | Solar | | 0,50 MW |
| 18 | Karaman Special Provincial Administration Solar Power Plant | Solar | Karaman Special Provincial Administration | 0,50 MW |
| 19 | Çavsa Solar Power Plant | Solar | | 0,30 MW |
| 20 | Hacı Hasan Armutlu Solar Power Plant | Solar | | 0,12 MW |
| 21 | Ermenek Government Office Solar Power Plant | Güneş | Ermenek Governnet Office | 0,040 MW |

Power Plants Under Construction

| No | The Name of Project | Type | Company | Installed Power |
|----|---|----------------------|-------------------------------------|-----------------|
| 1 | Zeyve Hydro Electric Power Plant | Hydro Electric Power | Zeyve Energy Production | 3,72 MW |
| 2 | Cereyan Karaman Solar Power Plant | Solar | Solar Cereyan | 2,97 MW |
| 3 | The Municipality of Karaman Solar Power Plant | Solar | The Municipality of Karaman | 0,99 MW |
| 4 | University of Karamanoğlu Mehmetbey Solar Power Plant | Solar | University of Karamanoğlu Mehmetbey | 0,46 MW |

Production Licensed Electric Power Plants

| No | The Name of Project | Type | Company | Installed Power |
|----|--|----------------|---------------------------------|-----------------|
| 1 | Komet Energy Natural Gas Power Plant | Natural Gas | Komet Energy | 1080 MW |
| 2 | Akyel1 Wind Energy Power Plant | Wind | Akyelres Electricity Production | 40 MW |
| 3 | Teksin Energy Solar Energy Power Plant | Solar | Teksin Energy | 33 MW |
| 4 | Gökdere Regulator and Hydro Electric Power Plant | Hydro Electric | | 31 MW |
| 5 | Mümine Hatun Solar Power Plant | Solar | Teknar Energy | 4,88 MW |

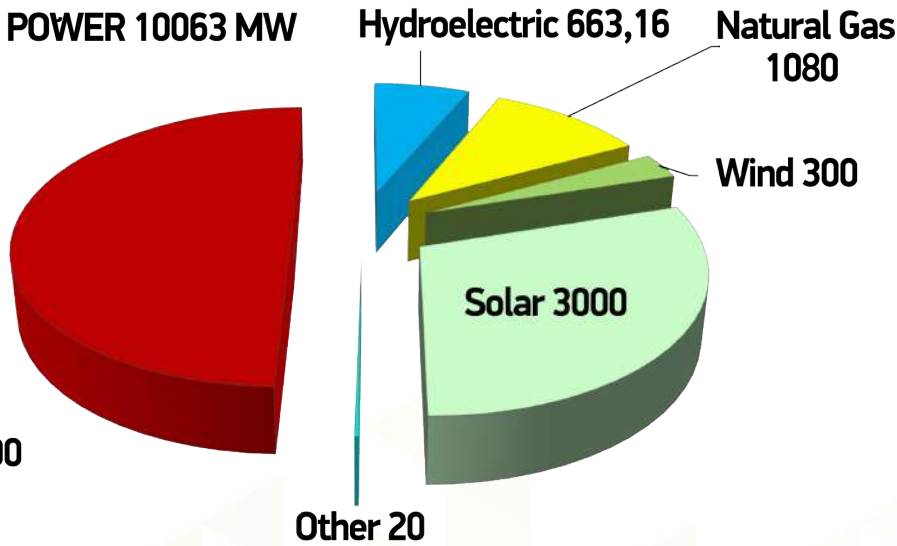
Pre Licensed and Planned Electric Power Plants

| No | The Name of Project | Type | Company | Installed Power |
|----|----------------------------------|------|--------------|-----------------|
| 1 | Sertavul Wind Energy Power Plant | Wind | Zorlu Energy | 170 MW |

Karaman 2023 Electric Energy Potential

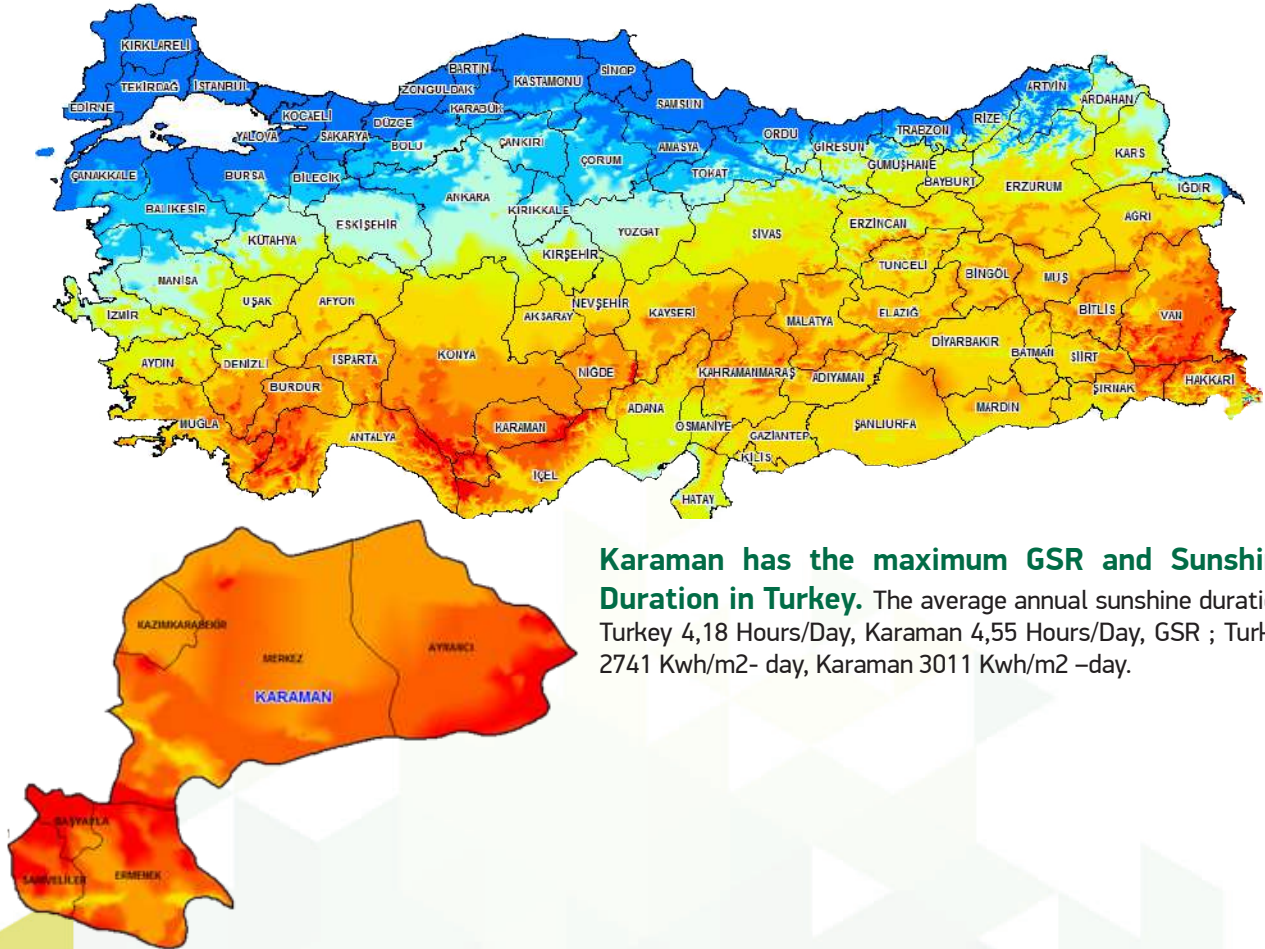
INSTALLED POWER 10063 MW

COOL 5000



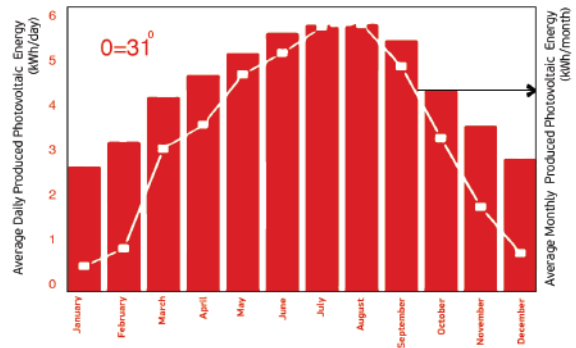
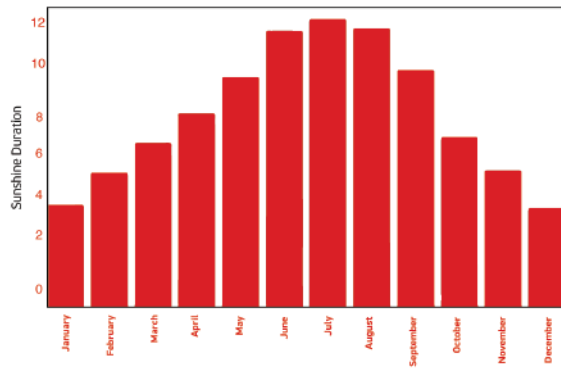
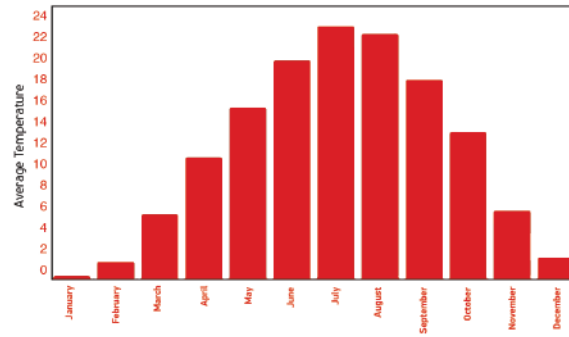
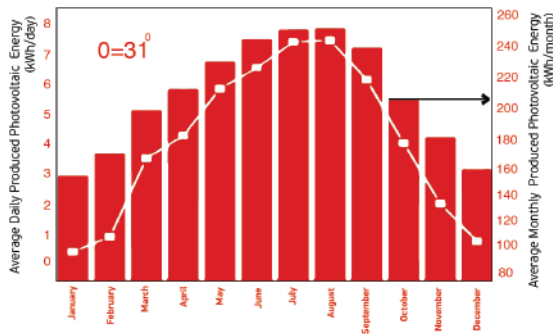
Karaman will be at the leading position in the energy sector within the next 10 years in Turkey. Energy sector will be the second sector after food sector.

Solar Map



Karaman has the maximum GSR and Sunshine Duration in Turkey. The average annual sunshine duration: Turkey 4,18 Hours/Day, Karaman 4,55 Hours/Day, GSR ; Turkey 2741 Kwh/m²- day, Karaman 3011 Kwh/m² –day.

Solar Energy Potential



For licensed production of 600 MW of solar energy set in 2013, a total of 9,000 MW preliminary license application, which is around 15 times the planned capacity has been made to EPDK in Turkey.

Karaman's licensed capacity is 38 MW. Pre – Applications for this capacity is 1,128 MW which is around 30 times of existing capacity. Two companies who participated to the 38 MW capacity competitive bidding have committed to pay approximately 98 million TL.

Electrical energy consumers can produce up to 1 MW without license to meet their energy needs. There are 3,44 MW unlicensed solar power plants which committed with MEDAS and producing electricity in Karaman.

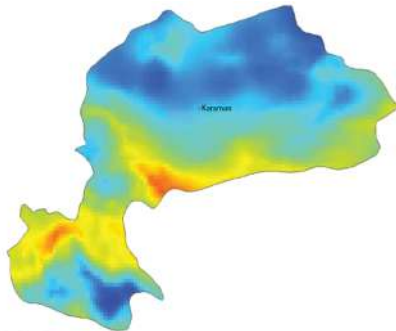
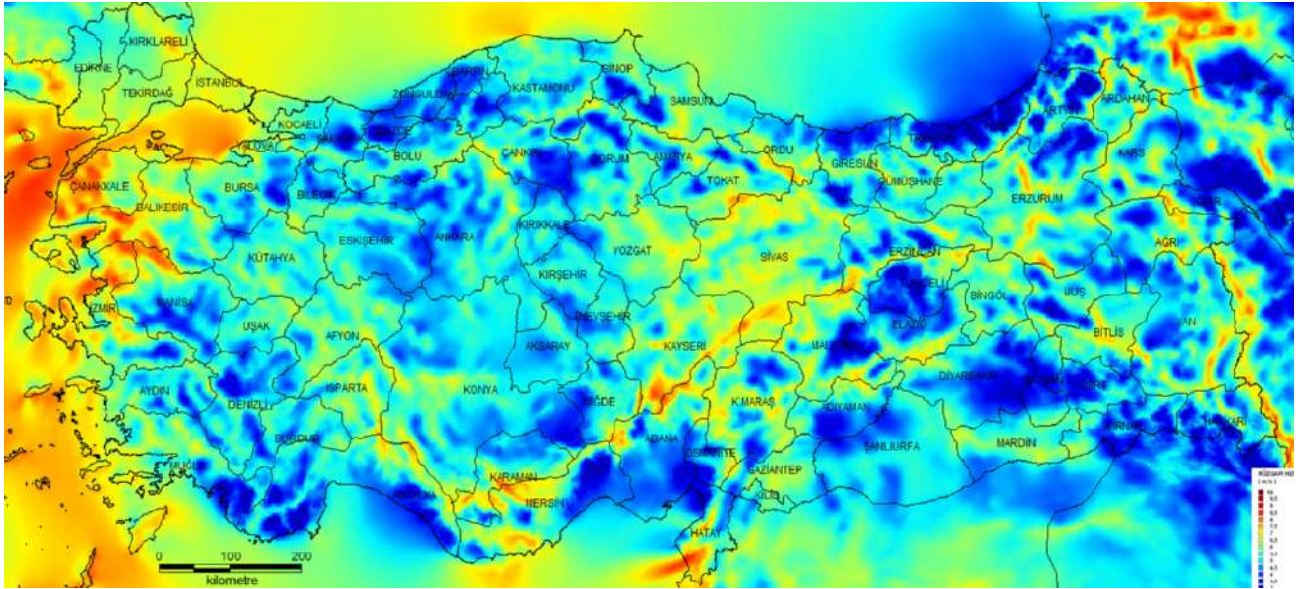
Karaman Licensed 38 MW Solar Energy Competitive Bidding Result

| Region No | Region Capacity | Quoted Price (Mw/TRY) | Allocated Capacity | Total License Cost (TRY) |
|-----------|-----------------|-----------------------|--------------------|--------------------------|
| Karaman | 38 Mw | 2.711.000,00 | 4,88 | 13.218.836,00 |
| | | 2.555.000,00 | 33,12 | 84.631.820,00 |

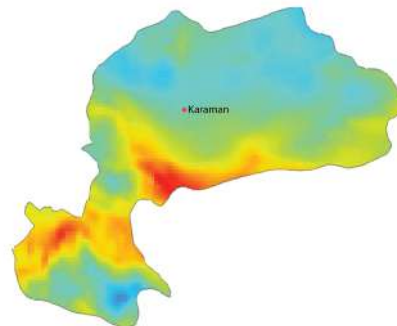
Sourcy: TEİAŞ

Wind Power Potential Map

Wind Speed Map / Annual Average at 50 m Height



DISTRIBUTION OF WIND SPEED 50 M
The Wind Speed value should be 7 m/s or more than this value for an Economical Wind Power Plant Investment



CAPACITY FACTOR DISTRIBUTION 50 M The Capacity Factor rate should be 35 % or More than this value for an Economical Wind Power Plant Investment

Karaman has the suitable wind potential for the wind power production.

Wind Power Plants That Can Be Installed In Karaman

| Wind Power at 50 m Height (W/m ²) | Wind speed at 50 m (m/s) | Total Area (km ²) | Total Installed Power (MW) |
|---|--------------------------|-------------------------------|----------------------------|
| 300-400 | 6.8-7.5 | 153.50 | 767.52 |
| 400-500 | 7.5-8.1 | 24.21 | 121.04 |
| 500-600 | 8.1-8.6 | 8.86 | 44.32 |
| 600-800 | 8.6-9.5 | 0.14 | 0.72 |
| >800 | >9.5 | 0 | 0 |
| Total: | | 186.72 | 933.60 |

Active and Under Construction Wind Farms

| No | The Name of Project | Type | Installed Power(MW) | Phase of Project |
|--------------|----------------------|------|---------------------|------------------|
| 1. | Merkezi Mut | Wind | 50,00 | In Operation |
| 2. | Mut | Wind | 50,00 | Project |
| 3. | Akyel-1-2 (40+10 MW) | Wind | 50,00 | Project |
| 4. | Hilal 2 | Wind | 7,00 | In Operation |
| 5. | Yellibel | Wind | 50,0 | Project |
| Grand Total: | | | 157,00 | |

Renewable Energy Support Mechanism in Turkey

| Manufacturing Plant | System Components | Domestic Content FIT (\$cent/kWH) | Price Warranty by Government (\$cent/kWH) |
|---------------------------------|---|-----------------------------------|---|
| Photovoltaic Solar Power Plants | PV panel integration and structural mechanics | 0,8 | 13,3 |
| | PV modules | 1,3 | |
| | Cells forming PV modules | 3,5 | |
| | Inverter | 0,6 | |
| | Reflective or focusing optical material | 0,5 | |
| | Total Domestic Content FIT | 6,7 | |
| Cocentrated Solar Power Plants | Radiation collection tube | 2,4 | 13,3 |
| | Reflective surface plate | 0,6 | |
| | Heliotropic system | 0,6 | |
| | Mechanical parts of thermal energy storing system | 1,3 | |
| | Radiation receiver, steam heat exchangers, pumps | 2,4 | |
| | Stirling engine | 1,3 | |
| | Panel integration and structural mechanics | 0,6 | |
| | Total Domestic Content FIT | 9,2 | |
| Wind Power | Domestic Production | 3,7 | 7,3 |
| Hydroelectric | Turbine, generator and power electronics | 2,3 | 7,3 |
| Biomass | Domestic Production | 5,6 | 13,3 |

TURKEY TOURISM MAP



Karaman is not only a city of agriculture and industry. With its rich historical background and natural beauty, it is also a tourism destination. Taking place among the most ancient settlements of Turkey, Karaman meets us with a vestiges from the ancient era. It is also possible to run in to traces of ancient civilizations, since Karaman is the cradle of hundreds of mounds some of them still untouched. Also a significant city in regard to belief culture, Karaman accommodates Derbe which is mentioned in the Bible and which has not just been visited multiple times but also live in by Paul the Apostle and is an important place in terms of the Christian belief today within its borders. Carrying its values without losing to future, Karaman is a kind of bridge between the past and the future with its castle, squares, concept of modern city planning and historical fabric. Located at the travel route of tourism centers Konya, Antalya and Cappadocia; Karaman has also an important place in terms of hospitality industry investments.



| Hotel Type | Hotels | Rooms | Beds |
|---------------------------------|--------|-------|------|
| **** | 3 | 211 | 440 |
| *** | 3 | 119 | 232 |
| ** | 1 | 44 | 92 |
| Private Facilities | 1 | 44+2 | 94 |
| Municipality Licenced Hotels | 5 | 145 | 235 |
| Total | 13 | 565 | 1093 |





BİN BİR CHURCH



DEMİRGÖMLEK TOMB



FİSANDON MOSQUE – CHURCH



ÇEŞMELİ CHURCH



AKTEKKE MOSQUE



YUNUS EMRE MOSQUE



İMARET MOSQUE



HOCA MAHMUT MOSQUE



KARAMAN CASTLE



TAŞKALE GRANARIES



TARTAN MANSION



**OLD KARAMAN
MUNICIPALITY**



MANAZAN CAVES



İNCESU CAVE



YEŞİLDERE DAM



GÖKSU VALLEY



GÖDET CANYON



KARADAĞ



ERMENEK DAM



TAŞKALE



KARADAĞ

Important Projects and Investment Incentives

INVESTMENT CLIMATE IN KARAMAN

Within next 10 years, after completion of current projects Karaman will be a capital in energy and food sectors.



Karaman Organized Industrial Agriculture Zone

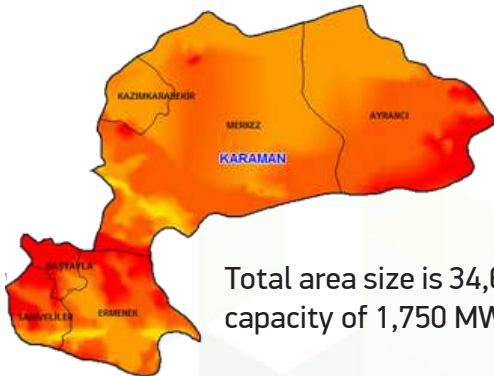
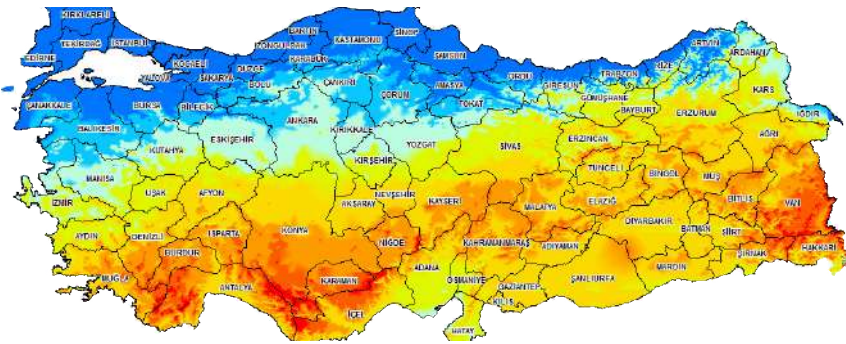


250 ha. Area /5.250 milch cow, 13.000 cattle capacity Ready-made land infrastructure with low prices. Legal procedures and the infrastructure for the establishment of OSB is continuing.

Important Projects and Investment Incentives

INVESTMENT CLIMATE IN KARAMAN

Karaman Organized Industrial Agriculture Zone



Total area size is 34,656,000 m² Solar energy potential will have an installed capacity of 1,750 MW.



KARAMAN TRANSPORTATION AND LOGISTICS PROJECTS



Karaman Konya – Karaman Mersin dual carriageway for cargo transportation and railroad track renewal.



With the connection of Karaman to Taşucu Port and the improvements of Antalya-Karaman and Karaman-Adana road connections, it will be available to reach 20 million people in 3 hours.

LOGISTICS CENTER PROJECT



Logistics Center will be built on a total area of 900 acres and nearby The OIZ. At first 300 acres will be at hand. Banks, restaurants and social supplement are also included in the project which will ensure cheaper raw material supplement and lower marketing cost.

A 300.000 m² area was determined just beside the OIZ. Planned with a holistic approach, the investors will be benefited through raw material supply and marketing.

AIRPORT PROJECT



The new airport that is planned to be built in Sudurađı neighbourhood 20 kms to the city centre and 60 kms to Eređli district of Konya, the airport will be established over 378.000 ha of area.

The design, ground studies and environmental studies have been completed and the project is supposed to be finished by three years.

KARAMAN TECHNOLOGY DEVELOPMENT ZONE (TECHNOPARK)



Decree no. 2016/7734 from the Council of Ministers for the establishment of a technology development zone in Karaman was published in the Official Gazette on 26.06.2015, issue no. 29396.

The technopark will be a bridge between the university and the private sector thus the qualifications of the workforce will increase. Similarly, reducing brain drain and increasing the quality of production will be beneficial to regional economy.

KARAMAN FREE ZONE



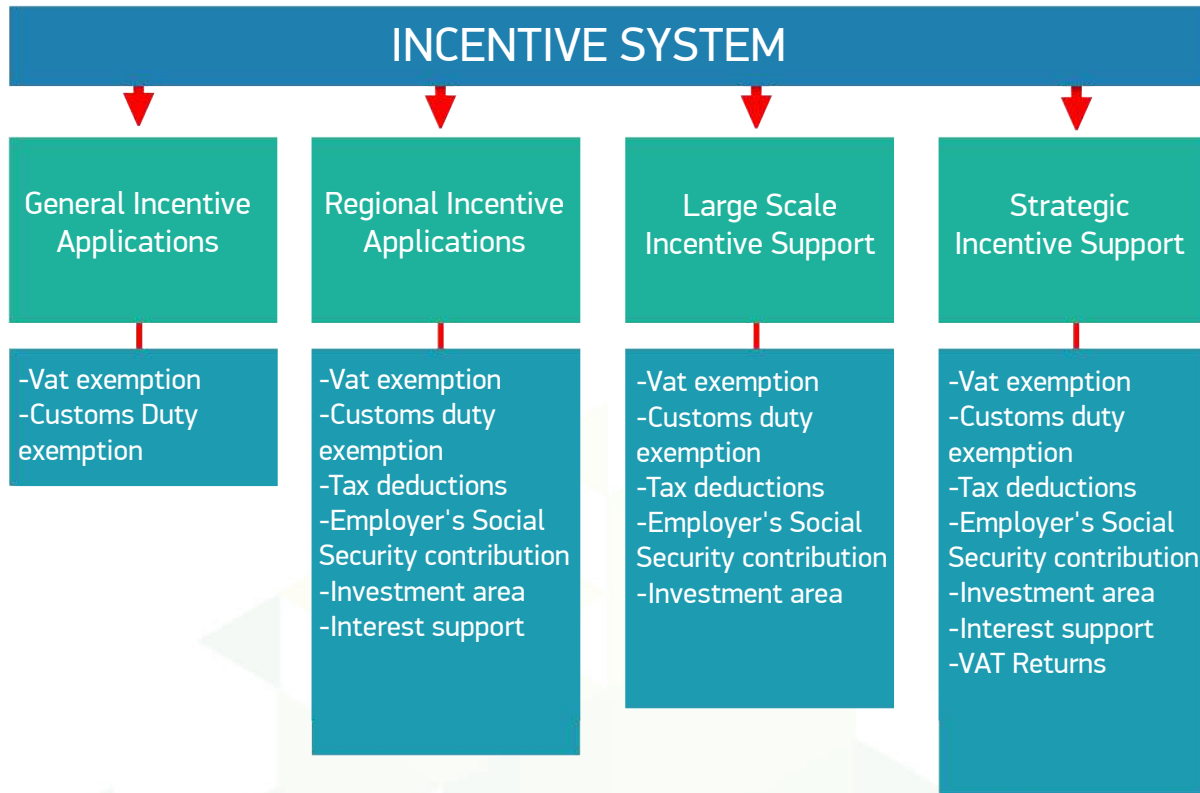
The zoning status works for a 2 million m² area is completed. A corporation was founded in order to establish the free zone. With the Council of Ministers decree, feasibility studies are to begin. With the establishment of a free zone, tax incentives, profit transfer availability, easy of trade, access to markets and suitable and cheap infrastructure will come together.

Important Projects and Investment Incentives

INVESTMENT CLIMATE IN KARAMAN

Ministry of Economy Incentive System





Terms to Apply Regional Incentives

| Sector Code | US-97 Code | Industry Sectors that can Benefit Regional Incentives | Minimum Investment |
|-------------|---------------------------------------|---|---|
| 1 | 0121 | Integrated animal husbandry investments including integrated animal husbandry investments for stock | 500 k TRY |
| 2 | 0500.0.04 | Aquaculture (including fish larvae and eggs production) | 500 k TRY |
| 3 | 15 | Manufacturing of food and beverages (except the investment subjects listed in footnote 6) | 1 m TRY |
| 5 | 18 | Manufacturing of wearing apparel | 1 m TRY |
| 8 | 1912 ve 1920 | Manufacturing of wearing apparel | 1 m TRY |
| 9 | 20 | Manufacturing of wood and cork products (except furniture), manufacturing of mats and other similar wickerwork | 2 m TRY |
| 10 | 21 | Manufacturing of paper and paper products | 10 m TRY |
| 11 | 24 | Manufacturing of chemical substances and products | 2 m TRY |
| 24 | 2695.1 | Manufacturing of concrete products for construction | 2 m TRY |
| 27 | 2720, 273 | Main metal industry, metal casting industry except for iron and steel | 2 m TRY |
| 28 | 28 | Metalware | 2 m TRY |
| 30 | 29 | Manufacturing of machinery and equipment | 2 m TRY |
| 32 | 30 | Manufacturing of office, accounting and data processing devices | 2 m TRY |
| 33 | 31 | Manufacturing of electrical machinery and equipment | 2 m TRY |
| 34 | 32 | Manufacturing of radio, television, communication equipment and devices | 2 m TRY |
| 35 | 33 | Manufacturing of medical devices, precision and optical instruments | 500 k TRY |
| 38 | 3591 ve 3592 | Motorcycle and bike manufacturing | 2 m TRY |
| 40 | 361 | Manufacturing of furniture (except for furniture manufactured only from plastic) | 2 m TRY |
| 41 | | Hotels (5510.1.01, 5510.2.01, 5510.3.02, 5510.5.02, 5510.5.04) | 3 stars and over |
| 42 | 5510.3.01 | Student dormitories | 100 students |
| 43 | 6302.0.01 | Cold storage house services | 1.000 m ² |
| 44 | 6302.0.03 | Licensed warehousing | 1 m TRY |
| 45 | 80 (Except 809) | Educational services (pre-school education included, education of adults and other educational activities are excluded) | 500 k TRY |
| 46 | 8511.0.01-05, 8511.0.99, 8531.0.01-03 | Hospital investment, nursing home | Hospital: 500 k TRY Nursing Home: 100 person |
| 48 | | Waste recovery and disposal facilities | 500 k TRY |
| 50 | | Greenhousing | 20 Acres |

Regional Investment Incentive Scheme (3rd Region)

| INCENTIVE ELEMENTS FOR KARAMAN | | | REGIONAL | | PRIORITY |
|--|---|--|--------------|------------|----------|
| | | | IN OIZ | OUT OF OIZ | |
| Tax Reduction | To be started till Dec. 31 th 2016 | Investment Contribution Rate (%) | 30 | 25 | 40 |
| | | Tax Reduction Rate(%) | 70 | 60 | 80 |
| | To be started after Jan. 1st 2017 | Rate of Contribution to Investment (%) | 25 | 20 | 30 |
| | | Tax Reduction Rate(%) | 60 | 50 | 70 |
| Social Security Premium Support (Employer's Share) | To be started till Dec. 31 th 2016 | Term of Support- Years | 6 | 5 | 7 |
| | To be started after Jan. 1st 2017 | Term of Support -Years | 5 | 3 | 6 |
| | Upper Limit of Incentive (Fixed Incentive Rate %) | | 25 | 20 | 35 |
| INTEREST SUPPORT | | TRY Loan | 3 | 3 | 5 |
| | | Foreign /FX Loan | 1 | 1 | 2 |
| VAT EXCEPTION | | | ✓ | | ✓ |
| CUSTOMS DUTY EXEMPTION | | | ✓ | | ✓ |
| LAND ALLOCATION | | | ✓ | | ✓ |
| REQUIRED MINIMUM FIXED INVESTMENT | | | 500.000 TRY* | | |

Notes: OIZ refers to the Organized Industrial Zones

*This amount may be higher for some sectors supported regionally. The support rates are higher in these large scale investments and strategic investments. For further details, see New Investment Incentives Program legislated by Decree 2012/3305.

Source: Ministry of Economy

Strategic and Large Scale Investment Incentives Elements

| INVESTMENT INCENTIVES FOR KARAMAN | | | LARGE SCALE INVESTMENT | | STRATEGIC INVESTMENTS |
|--|---|----------------------------------|------------------------|--------|-----------------------|
| | | | OUT OF OIZ | IN OIZ | |
| VAT EXEMPTION | | | ✓ | ✓ | ✓ |
| VAT REFUND | | | X | X | ✓ |
| CUSTOMS DUTY EXEMPTION | | | ✓ | ✓ | ✓ |
| TAX DEDUCTION | To be started till Dec. 31th 2016 | Investment Contribution Rate (%) | 35 | 40 | 50 |
| | | Tax Reduction Rate (%) | 60 | 70 | 90 |
| | To be started after Jan. 1st 2017 | Investment Contribution Rate (%) | 30 | 35 | 50 |
| | | Tax Reduction Rate (%) | 50 | 60 | 90 |
| SOCIAL SECURITY PREMIUM SUPPORT (EMPLOYER'S SHARE) | To be started till Dec. 31th 2016 | Term of Support-Years | 5 | 6 | 7 |
| | To be started after Jan. 1st 2017 | Term of Support-Years | 3 | 5 | 7 |
| | Upper Limit of Incentive (Fixed Incentive Rate %) | | 8 | 10 | 15 |
| LAND ALLOCATION | | | ✓ | ✓ | ✓ |
| INTEREST SUPPORT | | TRY Loan | X | X | 5 Point |
| | | Foreign /FX Loan | X | X | 2 Point |

Only for investments over 500 Million

**Agricultural and Rural Development Support Institution (TKDK)
EU Supports Through IPARD Programme
(Instruments for Pre-Accession Rural Development)**

| ACTIONS | MAX . GRANT(€) | GRANT RATE (%) |
|---|-----------------------|-----------------------|
| 101-Physical Investments of Agricultural Enterprises | | |
| 101-1 Agricultural Businesses Producing Milk | 20.000 - 1.000.000 | 60-70 |
| 101-2 Agricultural Businesses Producing Poultry Meat | 20.000 - 1.000.000 | 60-70 |
| 101-3 Poultry Meat Producing Agricultural Businesses | 20.000 - 500.000 | 60-70 |
| 101-4 Agricultural Businesses Producing Eggs | 20.000 - 1.000.000 | 60-70 |
| 103-Investments Towards Related with Physical Assets of Agriculture, Fishing and Marketing | | |
| 103-1-1 Processing and Marketing of Milk and Dairy Products | 30.000 - 3.000.000 | 50 |
| 103-1-2 Milk Collection Centers | 30.000 - 1.000.000 | 50 |
| 103-2-0 Red Meat Abattoir | 30.000 - 3.000.000 | 50 |
| 103-3-0 Poultry Meat Slaughterhouse | 30.000 - 3.000.000 | 50 |
| 103-2-4 Red Meat Processing 103-3-4 Poultry Meat Processing | 30.000 - 3.000.000 | 50 |
| 103-2-5 Red Meat Shredding Facilities 103-3-5 Poultry Meat Shredding Facilities | 30.000 - 3.000.000 | 50 |
| 103-5 Fruit and Vegetable Processing and Marketing | 30.000 - 1.250.000 | 50 |
| 103-4 Aquatic Products Processing and Marketing | 30.000 - 1.500.000 | 50 |
| 302- Diversification of Farm Activities and Business Development | | |
| 302-1 Diversification of Crop Production and The Processing and Marketing of Herbal Products | 5.000 - 500.000 | 65 |
| 302-2 Beekeeping and The Manufacturing bee products, Processing and Marketing | 5.000 - 500.000 | 65 |
| 302-3 Crafting and Local Products Businesses | 5.000 - 500.000 | 65 |
| 302-4 Rural tourism and recreation activities | 5.000 - 500.000 | 65 |
| 302-5 Aqua Culture | 5.000 - 500.000 | 65 |
| 302-6 Machinery | 5.000 - 500.000 | |
| 302-7 Renewable energy | 5.000 - 500.000 | 65 |

There exists VAT exemption under the EU Funds. In addition to the measures 101 and 103, + 10 % Grant support is provided to expenses related to waste storage and waste management .

Support Programme for Rural Development Investments Ministry of Food, Agriculture and Livestock

| | |
|-------------------------------|---|
| SCOPE OF SUPPORT | New Investments for Processing of agricultural products, storage and packagings and capacity building of existing active or inactive plants. Investments in renewal of technology. Investments towards to the completion of partially made investments. |
| APPLICABLE INVESTMENTS | <ul style="list-style-type: none">• Processing, Storage and Packaging of Herbal Products (1.000.000 TRY)• Storage of agricultural products (steel silos) (1.000.000 TRY)• Cold storage (1.000.000 TRY)• Investments in the construction of new greenhouses using alternative energy sources (3.000.000 TRY)• As alternative energy sources Geothermal, Biogas, Solar, and Wind energy generation facilities for agriculture activities• Processing and Packaging of animal originated manure (2.000.000 TRY)• Only Processing of Raw Leather regarding the Animal Products Processing, Packaging and Storage sector. (3.000.000 TRY) |
| TERMS | Investment amount on the basis of grant Legal Entity: 1.000.000 – 3.000.000 TRY Grant Support Ratio : %50 (Except VAT) |

Important Projects and Investment Incentives



1-Agricultural Investments

Apple, Pear, Cherry, Almond, Walnut

2-Animal Husbandry

Milk and meat bovines, chicken meat and poultry

3-Tourism

Hotels, Malls and Logistics

4-Energy

Thermic, Solar, Wind and Hydroelectric Plants

5.Industry

Apple Chips, Fruit Juice, Canned Fruit and Vegetables, Sunflower oil, Milk Powder, Chicken Meat, Caco, Hazelnut Meal, Film (packing), Cardboard Boxes, Pallet, Pelle, Egg and Apple Viol, Cold Storage, Coarse Fodder, Organic Manure

Karaman Appropriate Investment Areas

| Type of Investment | Min Investment (K €) | Capacity | Annual Operating Costs (K €) | NPV (K €) | Annual Equivalent Return (K €) | Payback Period (Years) | Related Incentives |
|---|----------------------|-------------|---|-----------|--------------------------------|------------------------|---|
| Apple Orchard, net, wind machine, equipment, irrigation | 385 | 100 da | 15 | 1.100 | 110 | 7 years | 50.000 € (G.T.H.B) ve Interest Free Loan |
| Greenhouse: Tomato cultivar , coal heat | 385 | 5.000m2 | 120 | 1.000 | 192 | 4 years | 125.000 € MoE incentives, Interest Free Loan, TKDK ve G.T.H.B |
| Dairy Cattle: Holstein | 1.270. | 100 Animals | 327 | 1.280 | 557 | 4 years | 600.000 € IPARD, MoE Incentives, Interest Free Loan, G.T.H.B |
| Poultry Farm | 130 | 25.000 | 70 | 1.070 | 130 | 3 years | 65.000 € IPARD, MoE Incentives, Interest Free Loan G.T.H.B |
| Broiler Farm (26.000 broilers) | 110 | 25.000 | 300 | 1.290 | 370 | 2 years | 55.000 € IPARD, MoE Incentives, Interest Free Loan G.T.H.B |
| Chicken Slaughter House | 7.000 | 120.000/day | Values are from the Ministry of Economy New Investment Data | | | | MoE Incentives (Zone 3) |

Karaman Appropriate Investment Areas

| Type of Investment | Min Investment Amount (K €) | Capacity | Annual Operating Costs (K €) | NPV (K €) | Annual Equivalent Return (K €) | Payback Period (Years) | Related Incentives |
|--|-----------------------------|---------------|---|-----------|--------------------------------|------------------------|--|
| Juice (2.003 T/year apricot, 8.229 T/year apple % 70 capacity) | 4.000 | 10.000 t | 1,300 | 10.000 | 2.000 | 6,5 yıl | 625.000 € IPARD, MoE Incentives, Interest Free Loan, G.T.H.B |
| Sunflower Oil | 2.300 | 10.000t | 8.425 | 21.000 | 9.600 | 3 yıl | MoE Incentives |
| Fruit Juice and Juicebox | 641 | 7200 t/year | Values are from the Ministry of Economy New Investment Data | | | | MoE Incentives (Zone 3) |
| Cold Storage | 1.400 | 4600m2 | Values are from the Ministry of Economy New Investment Data | | | | MoE Incentives (Zone 3) |
| Pulse Storage Facility | 1.300 | 8.000t/year | Values are from the Ministry of Economy New Investment Data | | | | MoE Incentives (Zone 3) |
| Dried Tomatoes | 1.100 | 2.900 t/year | Values are from the Ministry of Economy New Investment Data | | | | MoE Incentives (Zone 3) |
| Hazelnut Processing | 1.500 | 5.150 t/year | Values are from the Ministry of Economy New Investment Data | | | | MoE Incentives |
| Tomato Paste | 1.000 | 12.000 t/year | Values are from the Ministry of Economy New Investment Data | | | | MoE Incentives |

Karaman Appropriate Investment Areas

| Type of Investment | Min Investment Amount (K €) | Capacity | Annual Operating Costs (K €) | NPV (K €) | Annual Equivalent Return (K €) | Payback Period (Years) | Related Incentives |
|--|-----------------------------|-------------|---|-----------|--------------------------------|------------------------|--|
| Fruit Preserves Tahini and Honey | 1.000 | 4000 t/Year | Values are from the Ministry of Economy New Investment Data | | | | MoE Incentives |
| 1 MV PV Solar Plant (%70 annual capacity 2 m. kWh pro. 0,30TL/ kWh | 1.250 | 1 MW | 10 | 2.750 | 225 | 6 yıl | EBKDV, Epdk 0,15\$ |
| 45 MW Wind Power Plant | 40.000 | 45MW | Values are from the Ministry of Economy New Investment Data | | | | MoE Incentives, VAT Custom Tax, 0,073 \$ Purchase Guarantee for 10 years |
| Solar Energy Panel (200 MW /Year) | 81.000 | 200 MW/Year | Values are from the Ministry of Economy New Investment Data | | | | MoE Strategic And Large Scale Investment Incentives |

Karaman Appropriate Investment Areas

| Type of Investment | Min Investment Amount (K €) | Capacity | Annual Operating Costs (K €) | NPV (K €) | Annual Equivalent Return (K €) | Payback Period (Years) | Related Incentives |
|---|-----------------------------|---|---|-----------|--------------------------------|--------------------------|--------------------------|
| 4 Star Hotel (43 room) | 3.000 | 80 Beds | 555 | 11.900 | 1.300 | 4 Years | MoE Incentives, (Zone 5) |
| Corrugated paper and paperboard and of containers of paper and paperboard | 600 | 5.184.000 pc/ year | Values are from the Ministry of Economy New Investment Data | | | | MoE Incentives, (Zone 3) |
| Plastic Containers | 350 | 1.000.000 pc/ year | Values are from the Ministry of Economy New Investment Data | | | | MoE Incentives, (Zone 3) |
| Plastic Irrigation Pipes | 650 | Plastic Irrigation and Sprinkler Pipes 704 Ton/Year, Drip Irrigation Pipes 408 Ton/Year, Plastic Pipe and Fasteners 467 Ton/Year. Values are from the Ministry of Economy New Investment Data | | | | MoE Incentives, (Zone 3) | |

Why Karaman?

INVESTMENT
CLIMATE IN KARAMAN

Why Karaman?



| Factors | Karaman Investment Advantages |
|---|---|
| Raw Materials | High agriculture and husbandry raw materials potential. Rich presence of minerals and renewable energy potential. |
| Transportation, Logistics and Marketing | Karaman provides the ability to reach 15 million people in 3 hours. Also with railroad connection, it is possible to freight transport to Konya, Adana, Mersin, Eskişehir, Ankara, Kocaeli, Adapazarı and İstanbul. Through Mersin port which is only 130 kms away, it is possible to sell the goods or procure raw materials. |
| Land | €5 / m ² in the new OIZ enlargement area. |
| Labor | Over 100.000 qualified workforce potential in 6 universities including 5 in one-hour-away Konya. Average workforce costs are 15% lower compared to Turkey. |
| Energy Costs | 1st in Turkey regarding GSR and sunshine hours. The ability for the firms to produce their own electricity. Electricity prices are 0.09, 0.07 and 0.023 €/KWh in the evening, daytime and night respectively. Natural gas price is 0,03 € KWh. |
| Water | 0,75 €/m ³ water costs from Yeşildere Dam which is only 3 kms from the OIZ. |
| Suppliers and Supporting Industries | A large variety of supporting industries in Karaman and Konya. The ability to reach world markets through Mersin Port. |
| Nature and Environment | Mild and dry climate |
| Incentives | Karaman is in 3rd region in the new incentive system (4th if the investment is in the OIZ). 8% more advantageous regarding income and corporate tax, 8% and 2% for employer's contribution to social security compared to 1st region. 3% credit interest rate cut (non-existent in 1st region) also IPA for agricultural investment is available up to 70%. |



INVEST IN
KARAMAN

www.investinkaraman.gov.tr

www.karamandayatirim.org.tr



Mevlana

Kalkınma Ajansı

Development Agency

www.mevka.org.tr

www.mevka.org.tr

2016 INVESTMENT CLIMATE IN KARAMAN

Mevlana Kalkınma Ajansı
Mevlana Development Agency

Şeyh Sadrettin Mah.Ferit paşa Cad. No: 18 - 42040
Meram/KONYA
Tel: 0332 236 32 90
Fax: 0332 236 46 91
E-Mail: bilgi@mevka.org.tr

Karaman Yatırım Destek Ofisi
Karaman Investment Support Office

Ahi Osman Mah. İsmet Paşa Cad.
No: 2 Daire:3 Merkez/Karaman TÜRKİYE 70100
Tel: 0338 213 00 20
Fax: 0332 214 02 30
E-Mail: karamanydo@mevka.org.tr



INVEST IN
KARAMAN
www.investinkaraman.gov.tr